

Datasheet for CXS SNMP Explorer



is a software development and innovation company

based in Munich, Germany. It is a leading specialist in communication and engineering software for Industrial Automation with specific Facilities and Energy management product solutions

The ConneXSoft CXS SNMP Explorer is an engineering tool to access and discover data points in network attached devices via the standard SNMP protocol. Discovered information can be used to auto-configure CXS SNMP communication modules:

- CXS SNMP DI objects
- CXS SNMP DA Server for OPC

Summary

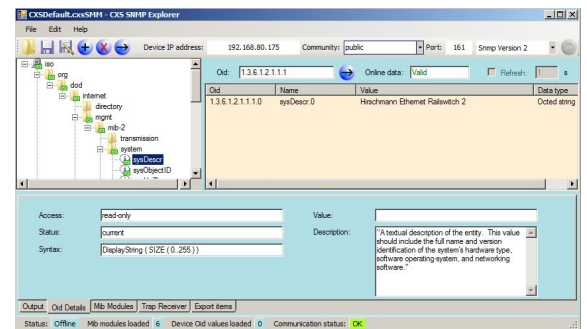
- SNMP namespace explorer with an intuitive interface
- Support for vendor specific MiB files
- OPC and System Platform configuration support
- SNMP V1, V2, V3 support
- SNMP traps support
- Datacenter workflow extensions
- Interoperates with the CXS SNMP Device Integration

Features and Benefits

Discover SNMP device namespaces

Discover standard and vendor specific datapoints by browsing through the target SNMP device namespace. Load MiB files to display data in context. Sets of MiB files can be combined to a single configuration file.

Data values can be viewed in the explorer and all associated data point details are exposed.



Autoconfigure CXS SNMP communication

Generate namespace configuration for the associated DI objects of the CXS SNMP Device Integration or the stand-alone CXS DASSNMP OPC DA Server.

Datacenter Extensions

The CXS SNMP Explorer provides extensions for datacenter specific workflows. Create profiles of PDU racks and the associated templates to rapidly add new server systems in bulk operations without any re-configuration or development effort.

SNMP V1, V2, V3 and trap support

The CXS SNMP Explorer supports SNMP versions V1, V2 and V3 including SNMP V3 security and authentication. SNMP traps are displayed to test the integration of exception conditions.

ConneXSoft Inc

4100 Corporate Square
Suite 169
Naples, FL, 34104, USA
+1 508 315 7231

ConneXSoft GmbH

Lohenstrasse 4
D- 82166 Munich-
Graefelfing Germany
+49 89 958990250

info@ConneXSoft.com
www.ConneXSoft.com

